

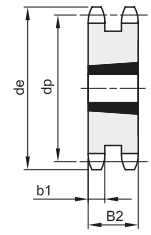
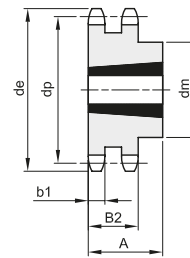
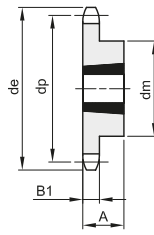
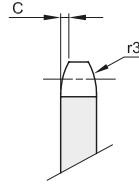


PIGNONI PER BUSSOLA CONICA - DIN 8187 - ISO 606

SPROCKETS FOR TAPER BUSHES - DIN 8187 - ISO 606

5/8" x 3/8"
15,875 x 9,65 mm
 Rullo 10,16 mm
10B - 1 - 2 - 3

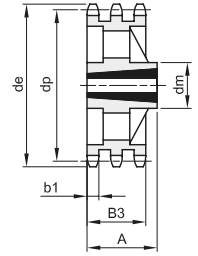
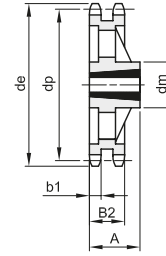
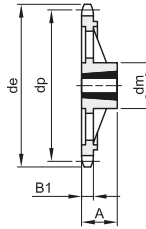
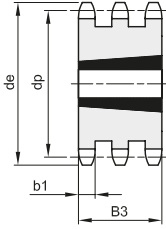
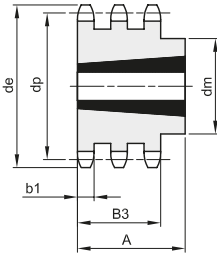
B1	B2	B3	b1	C	r3
9,1	25,5	42,1	9	1,6	16



1

2

3



4

5

6

7

8

Materiale: Acciaio C45 / *Materiale: Ghisa EN-GJL-200

Z	de	dp	semplici					doppi					tripli							
			codice	dm	A	Bussola	Tipo	Kg.	codice	dm	A	Bussola	Tipo	Kg.	codice	dm	A	Bussola	Tipo	Kg.
13	73,2	66,33	381350013	47	22	1008	1	0,23												
14	78,2	71,34	381350014	52	22	1108	1	0,27												
15	83,2	76,35	381350015	60	25	1210	1	0,30	382350015	25,5	1210	3	0,38	383350015	42,1	1215	5	0,63		
16	88,3	81,37	381350016	63	25	1210	1	0,38	382350016	25,5	1610	3	0,42							
17	93,3	86,39	381350017	71	25	1610	1	0,38	382350017	25,5	1610	3	0,47	383350017	42,1	1215	5	1,01		
18	98,3	91,42	381350018	71	25	1610	1	0,43	382350018	25,5	1610	3	0,60							
19	103,3	96,44	381350019	75	25	1610	1	0,54	382350019	25,5	1610	3	0,72	383350019	42,1	1615	5	1,19		
20	108,4	101,49	381350020	76	25	1610	1	0,61	382350020	25,5	1610	3	0,87							
21	113,4	106,51	381350021	76	25	1610	1	0,65	382350021	25,5	1610	3	1,01	383350021	42,1	1615	5	1,66		
22	118,4	111,55	381350022	76	25	1610	1	0,72	382350022	25,5	1610	3	1,18							
23	123,5	116,58	381350023	76	25	1610	1	0,77	382350023	25,5	1610	3	1,35	383350023	42,1	2012	5	1,78		
24	128,5	121,62	381350024	90	32	2012	1	0,98	382350024	90	32	2012	2	1,45						
25	133,6	126,66	381350025	90	32	2012	1	1,05	382350025	90	32	2012	2	1,55	383350025	105	44	2517	4	1,81
26	138,6	131,70	381350026	90	32	2012	1	1,11	382350026	90	32	2012	2	1,75						
27	143,6	136,74	381350027	90	32	2012	1	1,17	382350027	90	32	2012	2	1,98	383350027	110	44	2517	4	2,45
28	148,7	141,78	381350028	90	32	2012	1	1,29	382350028	90	32	2012	2	2,30						
30	158,8	151,87	381350030	90	32	2012	1	1,40	382350030	90	32	2012	2	2,63	383350030	120	44	2517	4	3,54
38	199,1	192,23	381350038	100	32	2012	1	2,43												
45	236,0	227,58	381350045	111	32	2012	1	3,55												
57*	296,6	288,18	381350057	111	32	2012	6	4,28												
76*	392,5	384,16	381350076	111	32	2012	6	5,95												