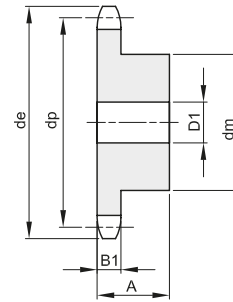
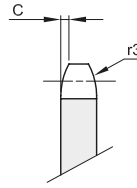




PIGNONI PER CATENE A RULLI - DIN 8188 - ISO 606 - ANSI B 29.1
SPROCKETS FOR ROLLER CHAINS - DIN 8188 - ISO 606 - ANSI B 29.1

ASA 140
44,45 x 25,4 mm
Rullo 25,4 mm
28A - 1



B1	B2	B3	b1	C	r3
23,5				5,8	47,5

Materiale: Acciaio C45

Z	de	dp	semplici					doppi				tripli						
			codice	dm	D1	A	Kg.	codice	dm	D2	A	Kg.	codice	dm	D3	A	Kg.	
8	132,0	116,15																
9	146,0	129,96																
10	160,0	143,85	131140010	100	25	70	5,23											
11	174,0	157,77	131140011	112	25	70	6,53											
12	188,0	171,74	131140012	125	25	70	8,02											
13	204,0	185,75	131140013	125	25	70	8,72											
14	218,0	199,76	131140014	125	25	70	9,46											
15	232,0	213,79																
16	246,0	227,84	131140016	160	30	75	14,65											
17	260,0	241,90	131140017	160	30	75	15,50											
18	274,0	255,98																
19	289,0	270,06																
20	303,0	284,15																
21	317,0	298,24																
22	331,0	312,34																
23	345,0	326,44																
24	359,0	340,55																
25	373,0	354,66																
26	387,0	368,77																
27	401,0	382,88																
28	416,0	397,00																
29	430,0	411,12																
30	444,0	425,24																
31	458,0	439,37																
32	472,0	453,49																
33	486,0	467,62																
34	500,0	481,75																
35	514,0	495,88																
36	529,0	510,01																
37	543,0	524,13																
38	557,0	538,27																
39	571,0	552,40																
40	585,0	566,54																