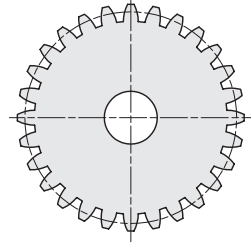
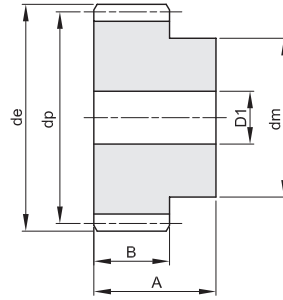
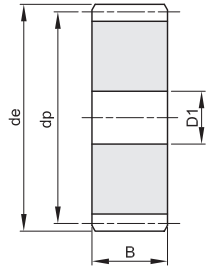




RUOTE DENTATE CILINDRICHE IN ACCIAIO INOX CYLINDRICAL GEARS IN STAINLESS STEEL

MODULO 1
ANGOLO DI PRESSIONE 20°

A	B
25	15



Materiale: INOX AISI 303

Z	codice	de	dp	dm	D1	Kg.
12	403010012	14,0	12,0	9		0,01
13	403010013	15,0	13,0	10		0,02
14	403010014	16,0	14,0	11		0,02
15	403010015	17,0	15,0	12		0,02
16	403010016	18,0	16,0	13		0,03
18	403010018	20,0	18,0	15	8	0,03
20	403010020	22,0	20,0	16	8	0,04
24	403010024	26,0	24,0	20	10	0,06
25	403010025	27,0	25,0	20	10	0,07
30	403010030	32,0	30,0	20	10	0,09
35	403010035	37,0	35,0	25	10	0,14
40	403010040	42,0	40,0	25	10	0,17

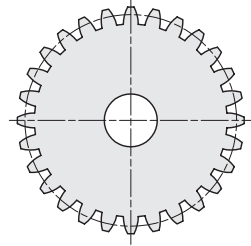
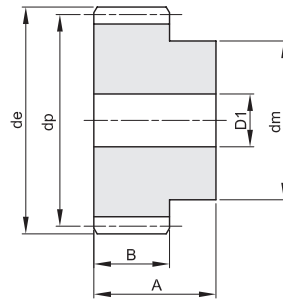
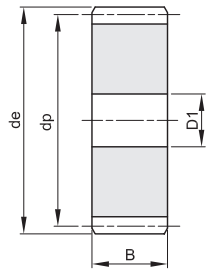
Z	codice	de	dp	dm	D1	Kg.
50	403010050	52,0	50,0	30	12	0,26
60	403010060	62,0	60,0	40	12	0,41
70	403010070	72,0	70,0	50	12	0,58
80	403010080	82,0	80,0		12	0,58
90	403010090	92,0	90,0		12	0,73
100	403010100	102,0	100,0		12	0,91
110	403010110	112,0	110,0		12	1,10
120	403010120	122,0	120,0		12	1,32



RUOTE DENTATE CILINDRICHE IN ACCIAIO INOX CYLINDRICAL GEARS IN STAINLESS STEEL

MODULO 1,5
ANGOLO DI PRESSIONE 20°

A	B
30	17



Materiale: INOX AISI 303

Z	codice	de	dp	dm	D1	Kg.
12	403015012	21,0	18,0	14	8	0,04
13	403015013	22,5	19,5	15	8	0,05
14	403015014	24,0	21,0	17	8	0,06
15	403015015	25,5	22,5	18	8	0,07
18	403015018	30,0	27,0	20	8	0,10
20	403015020	33,0	30,0	25	8	0,13
24	403015024	39,0	36,0	25	10	0,17
25	403015025	40,5	37,5	25	10	0,18
30	403015030	48,0	45,0	30	12	0,26
40	403015040	63,0	60,0	40	12	0,48
50	403015050	78,0	75,0	50	14	0,76
60	403015060	93,0	90,0	60	16	1,09

Z	codice	de	dp	dm	D1	Kg.
70	403015070	108,0	105,0	70	16	1,50
80	403015080	123,0	120,0		16	1,48
120	403015120	183,0	180,0		16	3,36