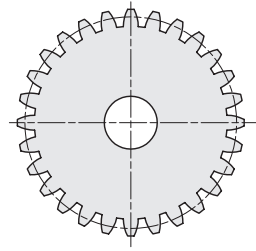
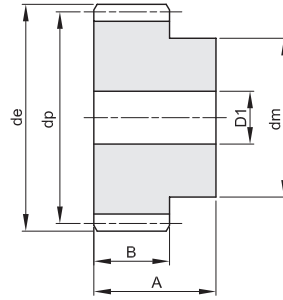
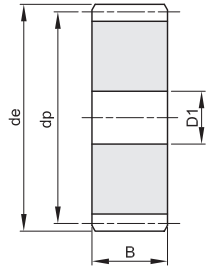




RUOTE DENTATE CILINDRICHE IN ACCIAIO INOX CYLINDRICAL GEARS IN STAINLESS STEEL

MODULO 2
ANGOLO DI PRESSIONE 20°

A	B
35	20



Materiale: INOX AISI 303

Z	codice	de	dp	dm	D1	Kg.
12	403020012	28,0	24,0	18	10	0,08
13	403020013	30,0	26,0	20	10	0,10
14	403020014	32,0	28,0	22	10	0,12
15	403020015	34,0	30,0	24	10	0,14
20	403020020	44,0	40,0	30	10	0,26
24	403020024	52,0	48,0	35	12	0,36
25	403020025	54,0	50,0	35	12	0,39
30	403020030	64,0	60,0	40	14	0,55
40	403020040	84,0	80,0	50	14	0,97
50	403020050	104,0	100,0	70	16	1,62
60	403020060	124,0	120,0	70	16	2,16
80	403020080	164,0	160,0		20	3,09

Z	codice	de	dp	dm	D1	Kg.



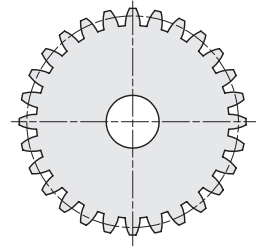
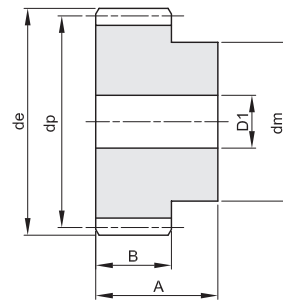
RUOTE DENTATE CILINDRICHE IN ACCIAIO INOX CYLINDRICAL GEARS IN STAINLESS STEEL

MODULO 2,5
ANGOLO DI PRESSIONE 20°

A	B
45	25

Materiale: INOX AISI 303

Z	codice	de	dp	dm	D1	Kg.
12	403025012	35,0	30,0	22	10	0,17
13	403025013	37,5	32,5	25	10	0,21
14	403025014	40,0	35,0	28	10	0,25
15	403025015	42,5	37,5	30	10	0,30
20	403025020	55,0	50,0	40	12	0,54
24	403025024	65,0	60,0	45	14	0,74
25	403025025	67,5	62,5	50	14	0,85
30	403025030	80,0	75,0	55	14	1,18
40	403025040	105,0	100,0	70	16	2,06
50	403025050	130,0	125,0	80	20	3,07
60	403025060	155,0	150,0	100	20	4,57



Z	codice	de	dp	dm	D1	Kg.