

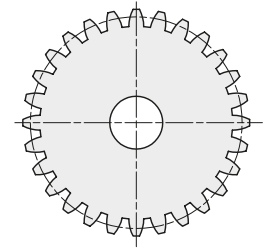
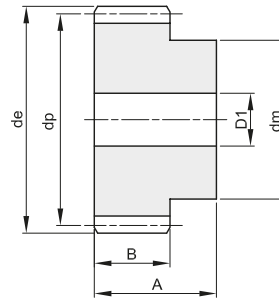
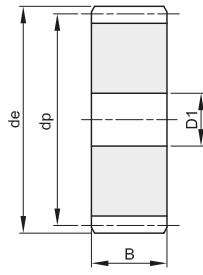


RUOTE DENTATE CILINDRICHE CYLINDRICAL GEARS

MODULO 1,5

ANGOLO DI PRESSIONE **20°**

A	B
30	17



Materiale: Acciaio C45

Z	codice	de	dp	dm	D1	Kg.
12	401015012	21,0	18,0	14	8	0,04
13	401015013	22,5	19,5	15	8	0,05
14	401015014	24,0	21,0	17	8	0,06
15	401015015	25,5	22,5	18	8	0,07
16	401015016	27,0	24,0	19	8	0,08
17	401015017	28,5	25,5	20	8	0,09
18	401015018	30,0	27,0	20	8	0,10
19	401015019	31,5	28,5	20	8	0,10
20	401015020	33,0	30,0	25	8	0,13
21	401015021	34,5	31,5	25	10	0,13
22	401015022	36,0	33,0	25	10	0,14
23	401015023	37,5	34,5	25	10	0,16
24	401015024	39,0	36,0	25	10	0,17
25	401015025	40,5	37,5	25	10	0,18
26	401015026	42,0	39,0	30	12	0,20
27	401015027	43,5	40,5	30	12	0,22
28	401015028	45,0	42,0	30	12	0,23
29	401015029	46,5	43,5	30	12	0,24
30	401015030	48,0	45,0	30	12	0,26
31	401015031	49,5	46,5	35	12	0,30
32	401015032	51,0	48,0	35	12	0,31
33	401015033	52,5	49,5	35	12	0,33
34	401015034	54,0	51,0	35	12	0,34
35	401015035	55,5	52,5	35	12	0,36
36	401015036	57,0	54,0	35	12	0,37
37	401015037	58,5	55,5	40	12	0,42
38	401015038	60,0	57,0	40	12	0,44
39	401015039	61,5	58,5	40	12	0,46
40	401015040	63,0	60,0	40	12	0,48
41	401015041	64,5	61,5	40	12	0,50
42	401015042	66,0	63,0	50	12	0,59
43	401015043	67,5	64,5	50	12	0,61
44	401015044	69,0	66,0	50	12	0,63
45	401015045	70,5	67,5	50	12	0,65
46	401015046	72,0	69,0	50	14	0,66
47	401015047	73,5	70,5	50	14	0,70
48	401015048	75,0	72,0	50	14	0,70
49	401015049	76,5	73,5	50	14	0,73
50	401015050	78,0	75,0	50	14	0,76
51	401015051	79,5	76,5	60	14	0,86
52	401015052	81,0	78,0	60	14	0,89
53	401015053	82,5	79,5	60	14	0,91
54	401015054	84,0	81,0	60	14	0,94

Z	codice	de	dp	dm	D1	Kg.
55	401015055	85,5	82,5	60	14	0,96
56	401015056	87,0	84,0	60	16	0,98
57	401015057	88,5	85,5	60	16	1,00
58	401015058	90,0	87,0	60	16	1,03
59	401015059	91,5	88,5	60	16	1,05
60	401015060	93,0	90,0	60	16	1,09
61	401015061	94,5	91,5	70	16	1,22
62	401015062	96,0	93,0	70	16	1,25
63	401015063	97,5	94,5	70	16	1,28
64	401015064	99,0	96,0	70	16	1,31
65	401015065	100,5	97,5	70	16	1,34
66	401015066	102,0	99,0	70	16	1,37
67	401015067	103,5	100,5	70	16	1,40
68	401015068	105,0	102,0	70	16	1,43
69	401015069	106,5	103,5	70	16	1,46
70	401015070	108,0	105,0	70	16	1,50
72	411015072	111,0	108,0		16	1,19
75	411015075	115,5	112,5		16	1,30
76	411015076	117,0	114,0		16	1,33
80	411015080	123,0	120,0		16	1,48
85	411015085	130,5	127,5		16	1,67
90	411015090	138,0	135,0		16	1,88
95	411015095	145,5	142,5		16	2,09
100	411015100	153,0	150,0		16	2,32
110	411015110	168,0	165,0		16	2,82
114	411015114	174,0	171,0		16	3,03
120	411015120	183,0	180,0		16	3,36
127	411015127	193,5	190,5		16	3,77