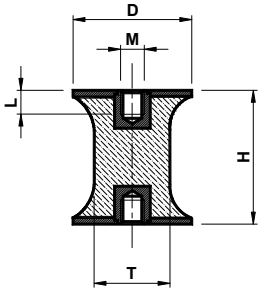




Waisted Bobbins: rubber / steel – Type:CT / Antivibrante Sgolato: gomma / metallo – Tipo:CT

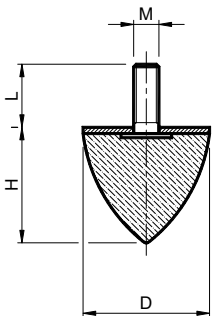


Antivibration mounts made by rubber and steel parts
MATERIALS metal components are zincplated
 NR/SBR rubber compound
SHORE 55° +/-5°
USE female-female

Antivibranti gomma-metallo
MATERIALI parti metalliche sono zincate
 Parti in gomma mescola NR/SBR
SHORE 55° +/-5°
IMPIEGO femmina-femmina

Type Tipo	Cod. N°	D	H	L	T	M
CT 10-10	AV002456	10	10	4	8	M4
CT 20-30	AV002459	20	30	6	14	M6
CT 30-20	AV002462	30	20	8	25	M8
CT 40-30	AV002465	40	30	8	33	M8
CT 40-48	AV002466	40	48	8	20	M8
CT 50-30	AV002469	50	30	10	41	M10
CT 60-60	AV002472	60	60	10	49	M10
CT 70-53	AV002475	70	53	10	45	M10
CT 75-40	AV002478	75	40	12	54	M12
CT 100-55	AV002481	100	55	18	80	M16

Conical Bobbins: rubber / steel – Type:CN / Antivibrante Conico: gomma / metallo – Tipo:CN



Antivibration mounts made by rubber and steel parts
MATERIALS metal components are zincplated
 NR/SBR rubber compound
SHORE 55° +/-5°
USE male-rubber foot

Antivibranti gomma-metallo
MATERIALI parti metalliche sono zincate
 Parti in gomma mescola NR/SBR
SHORE 55° +/-5°
IMPIEGO maschio-piede antivibrante

Type Tipo	Cod. N°	D	H	G	M
CKP 10-10	AV002555	10	10	12	M5
CKP 15-15	AV002559	15	15	10	M5
CKP 20-15	AV002563	20	15	18	M6
CKP 20-24	AV002564	20	24	18	M6
CKP 25-20	AV002569	25	20	18	M6
A2C 25-22-M6	AV002570	25	22	20	M6
A2C 25-22-M10	AV002571	25	22	20	M10
A2C 25-25	AV002572	25	25	18	M6
A2C 25-25 45SH	AV002573	25	25	18	M6
A2C 25-30	AV002574	25	30	18	M6
CKP 30-30	AV002578	30	30	20	M8
A2CKP 30-36	AV002579	30	36	23	M8
CKP 35-40	AV002582	35	40	20	M8
A2C 40-30	AV002585	40	30	23	M8
A2C 40-60	AV002586	40	60	23	M8

Type Tipo	Cod. N°	D	H	G	M
CKP 50-50-M8	AV002590	50	50	36	M8
A2C 50-50-M10	AV002591	50	50	28	M10
CKP 50-58	AV002592	50	58	28	M10
CKP 50-61	AV002593	50	61	26	M8
A2C 50-64	AV002594	50	64	35	M8
CKP 50-67	AV002595	50	67	36	M8
A2C 60-60	AV002598	60	60	33	M12
CKP 70-60	AV002601	70	60	35	M12
A2C 75-70	AV002604	75	70	37	M12
CKP 75-89	AV002605	75	89	37	M12
CKP 95-80	AV002608	95	80	42	M16
A2C 100-85	AV002611	100	85	42	M16
CKP 115-136	AV002614	115	136	43	M16
CKP 165-195	AV002617	165	195	43	M16